

Technical data



Technical data

Stage V

New



**Technical data on the Park Ranger 2155
- basic machine and attachments**



Technical specifications

Basic machine

Length	mm	2277
Width	mm	1007
Height with / without cabin	mm	1987 / 1350
Weight with / without cabin ¹⁾	kg	740 / 598
Payload with / without cabin	kg	560 / 702
Gross vehicle weight (GVA)	kg	1300
Turning circle - kerb to kerb	mm	3180
Turning circle - inside	mm	1120
Engine: Perkins diesel 403J-11	hp / kW	25 / 18,4
4-wheel drive		Standard

¹⁾ Includes: 75 kg operator and 90% fuel capacity.



Optimize your park maintenance

- with one machine and 19 dedicated functions

The Park Ranger 2155 is the most attractive choice within the compact machine class. With tailor-made quality attachments, fully aligned with the machine, you have 19 dedicated machines in one.

With compact dimensions and great manoeuvrability you have easy access to narrow areas and places and versatile handling of all groundcare and winter assignments as well as the suction/sweeper tasks.

With the powerful 25 hp Stage V Perkins engine and 4 wheel drive you always have the needed power and traction needed for your tasks. Furthermore, you have a utility machine which lives up to the emission standards of the future.

Top performance in every aspect

Egholm makes no compromises in quality. All attachments are carefully designed to supply the optimum performance in its specific area. High quality materials and functional couplings, ensures professional results and durable performance.

All attachments can be changed by one person in less than 4 minutes - no tools needed to shift, and no heavy lifting involved! You can, therefore, easily use the machine for different tasks during the day without wasting time on attachment changes in the workshop. And we all know: time is money. Easy handling is key both for operation efficiency and for safety.

For Park Ranger 2155 the following attachments are available:

Sweeping tasks

- Suction sweeper
- Weed brush

Groundcare tasks

- Rotary, mulch or collection mower 1000
- Rotary or mulch mower 1200
- Rotary or mulch mower 1500
- Grass collector
- Hedge cutter
- Flail mower / verticutter
- Lawn edger
- Environmental rake
- Leaf suction unit
- Tipping shovel
- Tipper trailer
- Load carrier with tip

Winter tasks

- Snow sweeper
- Snow blower
- Snow plough
- Snow V-plough
- Salt and sand spreader



New

Basic machine

- Park Ranger 2155

Standard equipment:

Tyres 18 x 9.50-8 / 6 layers	An all-round tyre that can be used all year round. The large width of the tyre ensures minimal surface pressure.
Drive	Permanent hydrostatic 4-wheel drive. Pure hydraulic-driven utility machine only requiring minimal maintenance.
Regulation of brush speed	Speed regulation of front brushes.
Lights and mirrors	Models with a cabin are fitted with EU-approved LED dipped beam, turn signals, position lights and rear lights. Side mirrors are mounted on the side of the cabin. Models without cabin are fitted with EU-approved LED rear lights.
Power and USB plugs	Power socket (12 V) in control panel and USB socket (5 V) in the ceiling for mobile phone charger, GPS etc.
Trailer hitch	Ball hitch and electric plug for trailer. TÜV approved (acc. ECE R55).
Seat	Mechanically suspended COBO seat with nappa.
Hooks and pockets for storage	Machines with cabin have hooks and pockets for practical storage of various items during transport.
Roof hatch	Machines with cabin have a roof hatch for additional air ventilation in the cabin.
Change of attachments	Quick change of attachments - no tools required (4 min.).
Colour	Green RAL6018.

Extra equipment (options):

Cabin	ROPS approved cabin including lights, mirrors, opening rear windows and roof hatch, number plate kit (front + rear), cabin light and heating. The cabin is mounted on dampers, which means less vibration for the operator.
Rear view camera	For additional visual control of the rear area.
Heated side view mirrors	A convenient way to clear away ice, snow and dew from your mirrors.
LED working lights - front	Two front mounted LED working lights provides a wide bright light improving the driver's view of the terrain.
LED working light - rear	One additional LED working light can be placed at the top of the back of the cabin and is suitable for night work.
Beacon	Beacon light can be mounted in either left and/or right side of the machine. The rotating warning light alerts about the presence of the machine at a 360 degree angle.
Flash lights	Flash lights for mounting on Park Ranger 2155 with cabin can be purchased as an extra for extra safety.
Mechanical seat - Grammer	Seat with mechanical suspension. Upholstered with nappa. Seat adjustment forwards/backwards, in height and according to weight. Lumbar support and the angle of the backrest can be adjusted. Built-in harness and seat switch. The seat can be mounted on Park Ranger 2155 with or without cabin.
Air suspension seat - Cobo	Seat with pneumatic suspension. Upholstered with nappa. The seat can be adjusted forwards and backwards. Built-in harness and seat switch. The seat can be mounted on Park Ranger 2155 with or without cabin.



Basic machine

- Park Ranger 2155



1007 mm



2277 mm



Extra equipment (options): Continued...

Armrest - Grammer	Can be mounted for optimal comfort on Grammer seat. The armrest can be adjusted up and down.
Armrest - Cobo	Can be mounted for optimal comfort on Cobo seat.
Cup holder	Holder for cup, water bottle etc. combined with storage space for e.g. cell phone. Is located at a practical distance from the operator in the cabin.
Counterweight	It is recommend to use a counterweight on the back of the Park Ranger 2155 when using the flail mower or the snow blower without salt and sand spreader. 2 x 18,5 kg.
Radio	Bluetooth radio with USB and AUX.
DAB+ radio	DAB+ radio with Bluetooth, USB and AUX.
Large radiator cover	Fit your Park Ranger 2155 with the large radiator cover when cutting grass, as the cover protects the engine against overheating.
Load carrier	A practical little load carrier that provides room to transport hand tools.
Shovel and broom holder	A little smart option that provides room to bring a shovel and a broom on the machine.
Rear lifter	A necessary option when using an environmental rake - to lower and lift the rake. Expands the possibilities for using alternative attachment solutions.
Tyres 18 x 9.50-8 / 4 layers	Tractor-patterned tyre, which is suitable for particularly demanding tasks and surfaces, for the transmission of maximum traction.
Anti-corrosion treatment	The anti-corrosion treatment of the basic machine is recommended when operating in the winter season.

Technical specifications

Dimensions

Length	mm	2277
Width	mm	1007
Height with / without cabin	mm	1987 / 1350
Wheelbase	mm	1044

Weights & other data

Weight with / without cabin ¹⁾	kg	740 / 598
Payload with / without cabin	kg	560 / 702
Gross vehicle weight (GVA)	kg	1300
Allowed axle load, front	kg	740
Allowed axle load, back	kg	740
Max. permitted trailer weight without brakes	kg	750
Max. combined weight without brakes	kg	2050
Max. permitted trailer weight with brakes	kg	1500
Max. combined weight with brakes	kg	2800

Performance

Turning circle - kerb to kerb	mm	3180
Turning circle - inside	mm	1120
Max. speed	km/h	16

Noise level

Passing - outside (EU 2018/985 Ann. III)	dB(A)	73
Operators seat - inside (EU 1322/2014 Ann. XIII)	dB(A)	79

Engine

Model	Perkins diesel 403J-11	
EU norm	Stage V	
Engine power	hp/kW	25 / 18,4
Fuel tank capacity	l	20

EU vehicle class

T2a

Type approval

EU regulation 167/2013

¹⁾ Includes: 75 kg operator and 90% fuel capacity.



Suction sweeper

- Park Ranger 2155

Standard equipment:

Hopper	As standard the hopper has a self-cleaning rotation filter system and a fresh water tank with 100 l capacity.
Front brush unit - 2 or 3 brushes	Consists of 2 front brushes and a suction mouth or 2 front brushes, 1 side brush and a suction mouth. Each brush is equipped with a water sprayer to prevent dust spreading while the unit is working. The suction mouth is designed with few mechanical parts for lower operation and maintenance costs. The side brush extends the sweeping width to 1660 mm and is perfect for sweeping in corners, under benches etc. With the side brush sweeping is possible at two levels: while the two front brushes sweep the road, the side brush can sweep the pavement or a higher stair step. If the side brush is needed, this is a factory mounted solution.
Height regulation	Nose wheel for height regulation of the front brushes for excellent sweeping result and minimal brush wear.
Hopper stand	Frame for easy fitting, removal and storage of the hopper.
Speed adjustment	Adjustable speed of the front brushes is standard.
Water meter	A water meter on the side of the hopper ensuring an excellent overview over water consumption and capacity.

Extra equipment (options):

External wander hose	The external suction hose is useful in areas that cannot be reached by the suction sweeper unit. With easy access, great mobility and excellent suction, cleaning can be done quickly around rubbish bins, under benches, on stairs or the like. The 6 m long hose is stored on top of the suction tank and is always ready for use. Specifications: 6 m x Ø150 mm.
-----------------------------	---



Suction sweeper - Park Ranger 2155



Technical specifications

Dimensions

Length with 2 / 3 brushes	mm	2830 / 3380
Width with 2 / 3 brushes	mm	1170 / 1570
Height with / without cabin	mm	1987 / 1850
Height with remote wander hose	mm	2150

Storage dimensions

Length with stand + 2 / 3 brushes	mm	1350 / 1500
Width with stand	mm	1200
Height with stand	mm	1920
Height with stand + remote wander hose	mm	2270

Weights

Weight with / without cabin ¹⁾	kg	938 / 796
Payload with / without cabin	kg	362 / 504
Weight - hopper (excl. remote wander hose)	kg	142
Weight - front brushes, 2 brushes	kg	56
Weight - front brushes, 2 brushes + 3 rd brush	kg	84

Hopper

Hopper net volume (EN 15429-1)	l	438
Hopper gross volume	l	458
Hopper load, max.	kg	300
Tipping height	mm	1300
Fresh water tank capacity	l	100

Sweeping system & performance

Working width - 2 brushes	mm	1200
Working width - 3 brushes	mm	1660
Turning circle - 2 brushes and hopper (wall to wall) ²⁾	mm	3490
Turning circle - 3 brushes and hopper (wall to wall) ²⁾	mm	4750
Brush speed	rpm	0-100
Brush diameter Ø	mm	570
Suction tube diameter Ø	mm	150
Ground clearance below suction mouth	mm	30-80
Ground clearance below brushes	mm	140
Air flow	m ³ /h	2500
Air speed	km/h	140
Dust levels: EU-norm PM10 and PM2.5		****

Noise emissions

Sound power level L _{WA} (2000/14/EC and DIN EN ISO 3744)	dB(A)	107
--	-------	-----

CE certified according to EU directive

¹⁾ Includes: hopper, 2 brushes, 75 kg operator and 90% fuel capacity.
²⁾ EN 15429-1



Weed brush

- Park Ranger 2155

Standard equipment:

Hydraulic adjustable brush The flexible brush is controlled by the hydraulic system of the machine.

Brush regulator The brush regulator allows you to adjust the brush speed.

Guard The guard prevents weeds from spreading over a wide area and for collecting the weeds under the vacuum nozzle.

Extra equipment (options):

Vacuum nozzle and hopper A dedicated vacuum nozzle with a integrated brush cylinder makes it possible to combine the weed brush with the suction sweeper hopper allowing you to vacuum the uprooted weeds into the hopper immediately.



1160 mm



3000 mm



1350 mm
1987 mm

Technical specifications

Dimensions

Length	mm	3000
Width	mm	1160
Height with / without cabin	mm	1987 / 1350

Storage dimensions

Length	mm	1180
Width	mm	920
Height	mm	540

Weight

Weight (weed brush)	kg	102
---------------------	----	-----

Performance

Working width	mm	700
Brush speed	rpm	0-114
Brush diameter Ø	mm	700
Ground clearance below suction mouth (option)	mm	30
Ground clearance below brush	mm	150
Operating speed	km/h	2-4

CE certified according to EU directive



Video



EGHOLM

Rotary/mulch mower 1000

- Park Ranger 2155



Standard equipment:

- Tilting for cleaning** The mower can tilt up and rest on two support wheels making cleaning easy.
- Stepless height adjustment** Cutting height can be infinitely adjusted via handle on the mower.
- Piano wheels** Piano wheels which move the cutter in line with the manoeuvring are equipped with heavy slide bearings in their wheel forks for durability.

Extra equipment (options):

- Large radiator cover** To avoid choking of the radiator grill while mowing dry grass in dusty surroundings, the large radiator cover can be fitted.
- Mulch mower kit** The rotary mower can be changed into a mulch mower with a cover placed inside the same mowing deck. Mulching creates fine trimmings, which supply the soil with natural nutrients and reduces the need of fertilisers.
- Collection mower (kit)** Rebuild the rotary mover to a collection mower. Collecting the grass trimmings ensures the most professional looking result and healthiest lawn. It is recommended to use the dedicated grass collector for this purpose. Please see separate data sheet for this attachment.

Technical specifications

Dimensions		
Length	mm	2800
Width	mm	1100
Height with / without cabin	mm	1987 / 1350
Storage dimensions		
Length	mm	880
Width	mm	1100
Height	mm	480
Weight		
Weight (rotary mower)	kg	90
Performance		
Ground clearance below mower	mm	80
No. of mower blades	pcs.	2
Cutting speed (tip speed)	m/sec.	77
Cutting width	mm	1050
Adjustable cutting height	mm	30-70
Theoretical mowing area - rotary	m ² /h	10500
Theoretical mowing area - mulch	m ² /h	10500
Theoretical mowing area - collection	m ² /h	8400
Max. recommended operating speed		
Rotary mower *	km/h	10
Mulch mower (shorter grass) *	km/h	10
Collection mower *	km/h	8
Noise emissions		
Sound power level L _{WA} (2000/14/EC and DIN EN ISO 3744)	dB(A)	99
CE certified according to EU directive		

* Depends on grass and height.



Video



EGHOLM

Rotary/mulch mower 1200

- Park Ranger 2155



1280 mm



2850 mm



Standard equipment:

- Tilting for cleaning** The mower can tilt up and rest on two support wheels making cleaning easy.
- Stepless height adjustment** Cutting height can be infinitely adjusted via handle on the mower.
- Piano wheels** Piano wheels which move the cutter in line with the manoeuvring are equipped with heavy slide bearings in their wheel forks for durability.

Extra equipment (options):

- Large radiator cover** To avoid choking of the radiator grill while mowing dry grass in dusty surroundings, the large radiator cover can be fitted.
- Mulch mower kit** The rotary mower can be changed into a mulch mower with a cover placed inside the same mowing deck. Mulching creates fine trimmings, which supply the soil with natural nutrients and reduces the need of fertilisers.

Technical specifications

Dimensions

Length	mm	2850
Width	mm	1280
Height with / without cabin	mm	1987 / 1350

Storage dimensions

Length	mm	980
Width	mm	1290
Height	mm	480

Weight

Weight (rotary mower)	kg	96
-----------------------	----	----

Performance

Ground clearance below mower	mm	110
No. of mower blades	pcs.	2
Cutting speed (tip speed)	m/sec.	77
Cutting width	mm	1210
Adjustable cutting height	mm	30-70
Theoretical mowing area - rotary	m ² /h	12100
Theoretical mowing area - mulch	m ² /h	12100

Max. recommended operating speed

Rotary mower *	km/h	10
Mulch mower (shorter grass) *	km/h	10

Noise emissions

Sound power level L _{WA} (2000/14/EC and DIN EN ISO 3744)	dB(A)	104
--	-------	-----

CE certified according to EU directive

* Depends on grass and height.



Video



EGHOLM

Rotary/mulch mower 1500

- Park Ranger 2155



1580 mm



2810 mm

1350 mm
1987 mm

Standard equipment:

- Hydraulic tipping function** Using the control handle, the cutter can be tipped into vertical position for easy cleaning and maintenance of the cutter.
- Hydraulic height adjustment** The cutting height is adjustable using the hydraulic system of the machine.
- Specially developed blades** The cutter is equipped with specially developed blades which ensure a nice result in shorter time and using less power.
- Piano wheels** Piano wheels which move the cutter in line with the manoeuvring are equipped with heavy slide bearings in their wheel forks for durability.
- Lawn protection screens** The lawn protection screens protect both the blades and the lawn. The screens prevent larger sharp or hard objects from hitting the knives, thereby reducing wear of the knives. The screens also protect the lawn, as you avoid them running down into the lawn if the mower is lowered too much.

Extra equipment (options):

- Large radiator cover** To avoid choking of the radiator grill while mowing dry grass in dusty surroundings, the large radiator cover can be fitted.
- Mulch mower kit** The rotary mower can be changed into a mulch mower with a new set of blades and a cover placed inside the same mowing deck. Mulching creates fine trimmings, which supply the soil with natural nutrients and reduces the need of fertilisers.

Technical specifications

Dimensions

Length	mm	2810
Width	mm	1580
Height with / without cabin	mm	1987 / 1350

Storage dimensions

Length	mm	990
Width	mm	1582
Height	mm	480

Weight

Weight (rotary mower)	kg	140
-----------------------	----	-----

Performance

Ground clearance below mower	mm	95-115
No. of mower blades	pcs.	3
Cutting speed (tip speed)	m/sec.	77
Cutting width	mm	1500
Adjustable cutting height	mm	30-80
Theoretical mowing area - rotary	m ² /h	15000
Theoretical mowing area - mulch	m ² /h	13500

Max. recommended operating speed

Rotary mower *	km/h	10
Mulch mower (shorter grass) *	km/h	9

Noise emissions

Sound power level LwA (2000/14/EC and DIN EN ISO 3744)	dB(A)	104
--	-------	-----

CE certified according to EU directive

* Depends on grass and height.





Grass collector

- Park Ranger 2155



1100 mm



3100 mm

1950 mm
1987 mm

Standard equipment:

- Hydraulic tipping** Easy emptying of the hopper without leaving the cabin. Hydraulic tipping function and automatic lid opening. With a tipping height of 1800 mm it can be emptied directly into a container.
- Two-piece suction hose** The two-piece suction hose ensures easy access in case of clogging.
- Air intake** A special air intake on both sides of the hopper protects the engine of the utility machine against grass dust.
- Safety valve** A safety valve makes sure to stop both turbine and rotary mower while the hopper is being emptied.
- Stand** A stand for easy and quick attaching/detaching of the hopper is standard equipment.
- Radiator cover** To ensure the absolute best conditions for air access and cooling, the grass collector is equipped with a radiator cover.

Extra equipment (options):

- Mulch and rotary mower kits** You can quickly convert the grass collector to a non-collecting mulch mower or standard rotary mower with the help of special kits available.
- Leaf suction unit** The grass collector can also be combined with the leaf suction unit for easy collection of leaves.

Technical specifications

Dimensions

Length (with mower 1000)	mm	3100
Width (with mower 1000)	mm	1100
Height with / without cabin	mm	1987 / 1950

Storage dimensions

Length	mm	1700
Width	mm	1050
Height	mm	2000

Weights

Weight with / without cabin ¹⁾	kg	1036 / 809
Payload with / without cabin	kg	264 / 406
Weight (grass collector)	kg	206
Weight (frame)	kg	31

Hopper (grass collector)

Hopper volume	l	470
Hopper load, max.	kg	120
Tipping height	mm	1800

Performance

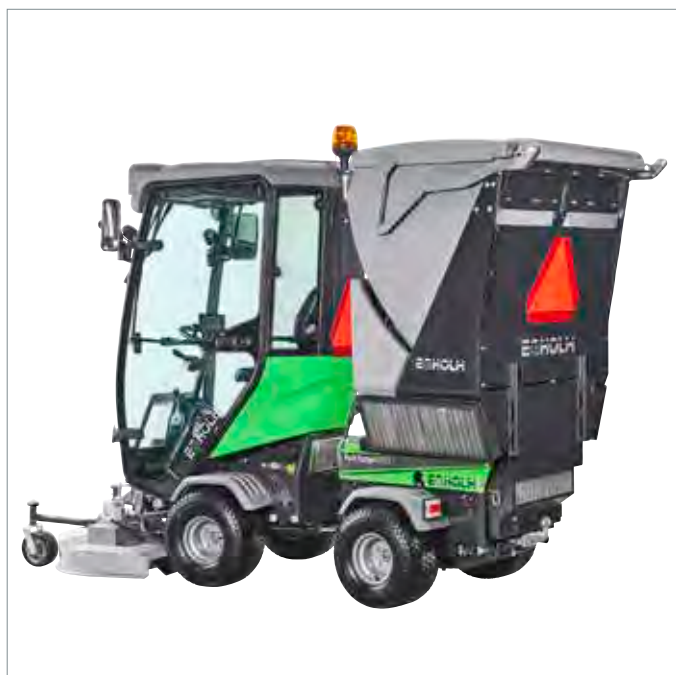
Air flow	m ³ /h	1500
Air speed	km/h	70
Operating speed	km/h	8-10

Noise emissions

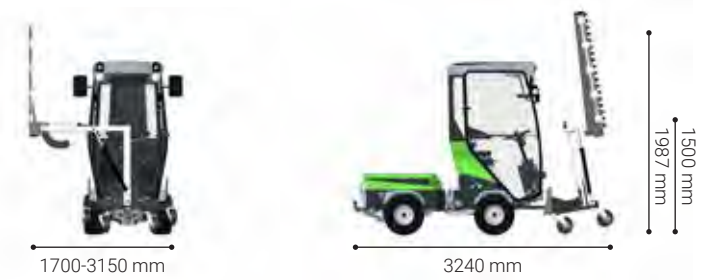
Sound power level L _{WA} (2000/14/EC and DIN EN ISO 3744)	dB(A)	107
--	-------	-----

CE certified according to EU directive

¹⁾ Includes: grass collector, mower 1000, 75 kg operator and 90% fuel capacity.



Hedge cutter - Park Ranger 2155



Standard equipment:

- Protective guard** For mounting on the cutter bar during transport and storage.
- Support strut** The hedge cutter is equipped with support strut which are used when dismantling the tool for secure parking.
- Holder** To always have spray oil to hand, a holder for spray oil is mounted on the vertical boom.

Technical specifications

Dimensions

Length	mm	3240
Width	mm	1700-3150
Height with / without cabin	mm	1987 / 1500

Storage dimensions

Length	mm	1000
Width	mm	1500
Height	mm	1650

Weights

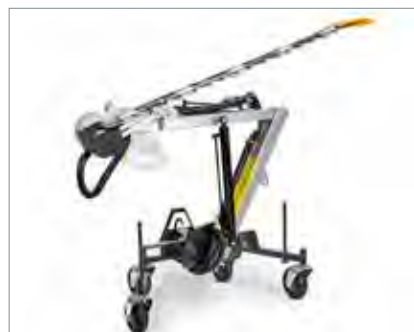
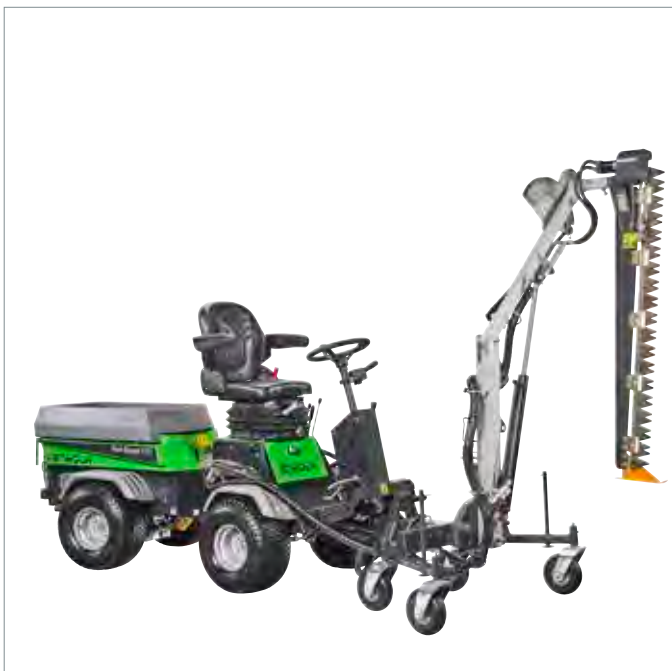
Weight (cutter)	kg	24
Weight (arm)	kg	102

Performance

Cutting width	mm	1300
Cutting height, max. *	mm	3200
Horizontal cutting height *	mm	0-2100
Horizontal reach *	mm	0-2500
Branch thickness, max.	mm	25
Operating speed	km/h	0-2
No. of blades	pcs.	36
Oil consumption	l/min.	25

CE certified according to EU directive

* The cutting boom range is stated with mounted cutter bar.





Flail mower

- Park Ranger 2155



Standard equipment:

Clearing height adjustment

The clearing height is adjusted using the two forward wheels (rough and fine adjustment). Rough adjustment using seven adjusting rings in interval 0-110 mm. Fine adjusting carried out by a variable-adjustable lever.

Extra equipment (options):

Verticutter knives

Changing the flails with vertical blades converts the flail mower into a verticutter, which deals with moss and weeds without the need for pesticides. The verticutter removes moss while simultaneously cutting a thin score in the turf, so the grassroots are aired. This strengthens the grass so the turf is much more resilient to weeds.

Counterweight

It is recommend to use a counterweight on the back of the Park Ranger 2155 when using the flail mower. (2 x 18,5 kg)

Radiator cover

It is recommend to use a radiator cover for mowing in very dry grass and dusty surroundings, as this stops the radiator from becoming choked with grass and protects the motor.

Technical specifications

Dimensions

Length	mm	2950
Width	mm	1500
Height with / without cabin	mm	1987 / 1350

Storage dimensions

Length	mm	955
Width	mm	1475
Height	mm	435

Weight

Weight (flail mower / verticutter)	kg	148 / 145
------------------------------------	----	-----------

Performance

No. of flails	pcs.	76
No. of vertical blades (max.)	pcs.	38
Flail - clearing width	mm	1226
Flail - clearing height	mm	1-110
Rotation of blades	rpm	2800
Verticutter - clearing width	mm	1172
Verticutter - clearing depth	mm	0-15

Noise emissions

Sound power level LwA (2000/14/EC and DIN EN ISO 3744)	dB(A)	101
--	-------	-----

CE certified according to EU directive





Lawn edger

- Park Ranger 2155

Standard equipment:

Rotary cutter with two blades	The lawn edger has two blades for optimal performance. While cutting the edge the machine also cultivates the ground for a perfect result.
Adjustable working depth	The working depth is regulated according to ground conditions, by adjusting the support wheel.
Reversible blade	Makes it possible to cutting outwards or inwards.
Adjustable offset	Opens up the possibilities of cultivating soil.



Technical specifications

Dimensions

Length	mm	2340
Width	mm	1170-1300
Height with / without cabin	mm	1987 / 1350

Storage dimensions

Length	mm	540
Width	mm	920
Height	mm	500

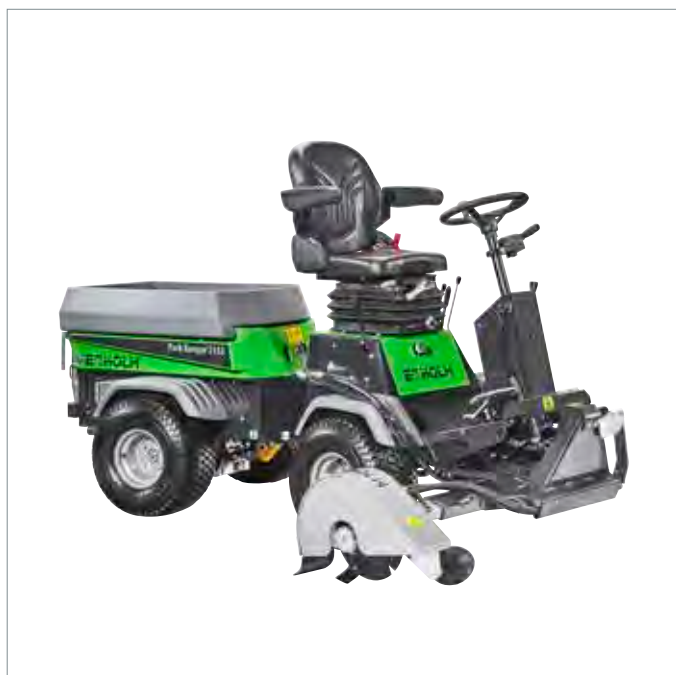
Weight

Weight (lawn edger)	kg	56
---------------------	----	----

Performance

Clearance height under cutter	mm	140
Cutting depth (max.)	mm	95
Offset	mm	150
Operating speed	km/h	1-2

CE certified according to EU directive



Video



Environmental rake

- Park Ranger 2155



1100 mm



2600 mm



Standard equipment:

Rear facing draw hoes The environmental rake has rear facing draw hoes which does not catch on roots.

Extra equipment (options):

Rear lifter A mandatory option to lift and lower the rake.

Technical specifications

Dimensions

Length	mm	2600
Width	mm	1100
Height with / without cabin	mm	1987 / 1350

Storage dimensions

Length	mm	500
Width	mm	1100
Height	mm	260

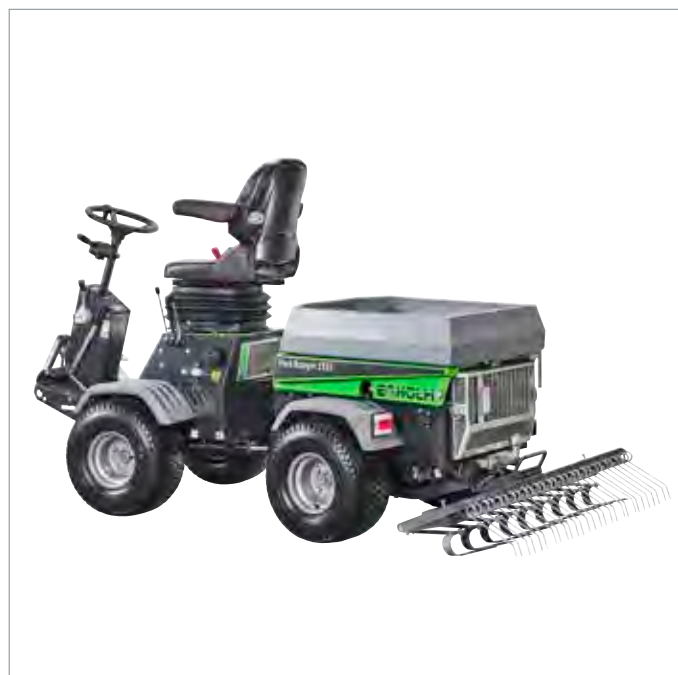
Weight

Weight (environmental rake)	kg	32
-----------------------------	----	----

Performance

Working width	mm	1100
Ground clearance below rake	mm	80
Working depth of the drag hoes	mm	20-40

CE certified according to EU directive



Leaf suction unit - Park Ranger 2155



1150 mm



2840 mm



1950 mm
1987 mm

Standard equipment:

- Leaf collection hose** The leaf collection hose has a long reach of 4,2 m.
- Adjustable handle** An adjustable handle on the leaf suction hose makes it easy for the user to adjust the working position. The supporting arm prevents the hose from resting on and damaging hedges and ornamental plants during work.
- Central adjustment** Central adjustment of the casters ensures quick and easy adjustment of suction height, making sure that it fits both the surface and the amount of leaves perfectly.

Extra equipment (options):

- Grass collector** Must be combined with the grass collector hopper in order to function. Please see separate data for grass collector/hopper specifications and functions.

Technical specifications

Dimensions

Length	mm	2840
Width	mm	1150
Height with / without cabin	mm	1987 / 1950

Storage dimensions

Length	mm	800
Width	mm	1050
Height	mm	900

Weights

Weight with / without cabin ¹⁾	kg	1036 / 809
Payload with / without cabin	kg	264 / 406
Weight (leaf suction unit)	kg	90

Performance

Vacuum width	mm	1050
Ground clearance under vacuum nozzle	mm	180
Leaf collection hose reach	mm	4200
Suction hose diameter Ø	mm	125
Leaf collection hose diameter	mm	125
Air flow between 2 turbines	m ³ /h	2250
Air speed in leaf collection hose	km/h	184
Operating speed	km/h	3-6

Noise emissions

Sound power level L _{WA} (2000/14/EC and DIN EN ISO 3744)	dB(A)	107
--	-------	-----

CE certified according to EU directive

¹⁾ Includes: leaf suction unit, grass collector, 75 kg operator and 90% fuel capacity.





Tipping shovel

- Park Ranger 2155

Standard equipment:

Lifting capacity: 100 kg The tipping shovel makes light work of transporting gravel, sand or mould and saves the operator many lifts during the working day. 100 kg is easily transported from one place to another - even on the narrowest paths.

Hydraulic tipping function The hydraulic tipping function ensures an easy handling and is perfect when unloading over obstacles like for example small hedges. The transported material is spread evenly by unloading. For a perfect result level the layer with the edge of the shovel.

Robust steel construction The shovel features a robust steel construction, which enables it to manage a variety of different applications besides transporting material, for example to scrape off unwanted grass growth from flagged areas.



1045 mm



2840 mm



1350 mm
1987 mm

Technical specifications

Dimensions

Length	mm	2840
Width	mm	1045
Height with / without cabin	mm	1987 / 1350

Storage dimensions

Length	mm	670
Width	mm	1045
Height	mm	405

Weight

Weight (tipping shovel)	kg	40
-------------------------	----	----

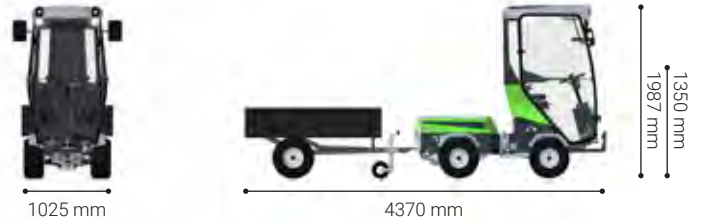
Performance

Volume	l	66
Lifting capacity	kg	100
Ground clearance under shovel	mm	480

CE certified according to EU directive



Tipper trailer - Park Ranger 2155



Standard equipment:

- Steel chassis** The tipper trailer features a strongly built steel chassis with fixed headboard and sides.
- Hydraulic tip function** The unloading of the 0,44 m³ trailer is easily done via the joystick from the comfort of the driver seat.
- Support wheel** The support wheel allows for easy attaching, detaching and storage.

Extra equipment (options):

- Side extensions** The optional side extensions increase the volume of the trailer. The side extensions are 40 cm in the height.
- Lighting** The galvanized beam with rear lights makes the trailer visible in traffic.

Technical specifications

Dimensions

Length	mm	4370
Width	mm	1025
Height with / without cabin	mm	1987 / 1350

Storage dimensions

Length	mm	2100
Width	mm	1025
Height	mm	850

Weights

Weight with / without cabin ¹⁾	kg	878 / 736
Payload with / without cabin	kg	422 / 534
Weight (tipper trailer)	kg	138

Performance

Platform, length	mm	1500
Platform, width	mm	950
Platform, height	mm	310
Platform, height with optional side extensions	mm	350
Volume	m ³	0,44
Volume with side extensions	m ³	1,02
Load carrying capacity, max.	kg	440
Loading height	mm	850

CE certified according to EU directive

¹⁾ Includes: tipper trailer, 75 kg operator and 90% fuel capacity.



Load carrier with tip - Park Ranger 2155



920 mm



2470 mm



1350 mm
1987 mm

Standard equipment:

- Hydraulic tipping** The hydraulic tipping action makes it fast and easy to empty the load carrier with tip.
- Removable sides** The volume can be adjusted with the removable sides.
- Lockable back flap** The back flap can be locked in the horizontal position to allow for the transportation of planks, garden tools etc.
- Stand** The supplied stand allows for simple and quick fitting and removal of the load carrier with tip. One person can therefore easily attach / detach the load carrier with tip alone.

Technical specifications

Dimensions

Length	mm	2470
Width	mm	930
Height with / without cabin	mm	1987 / 1350

Storage dimensions

Length with stand	mm	1400
Width with stand	mm	930
Height with stand	mm	1360

Weights

Weight with / without cabin ¹⁾	kg	834 / 692
Payload with / without cabin	kg	466 / 608
Weight (load carrier with tip)	kg	94

Performance

Platform, length	mm	1040
Platform, width	mm	860
Platform, height	mm	300/600
Volume	m ³	0,4
Load carrying capacity, max.	kg	300
Loading height	mm	700-1040

CE certified according to EU directive

¹⁾ Includes: load carrier, 75 kg operator and 90% fuel capacity.





Snow sweeper

- Park Ranger 2155



1220 mm



3090 mm

1987 mm
1350 mm

Standard equipment:

Trapeze mounting The trapeze-mounting ensures the snow sweeper remains clear of the wheels of the utility machine at all times, whatever the angle. The snow sweeper automatically turns with the utility machine - always sweeping in front of the wheels of the utility machine.

Reverse rotation function Reversing the brush rotation ensures that the operator can sweep material when reversing out of an alley or parking spot, which ensures an excellent result.

Adjustable speed The rotation speed can easily be adjusted from the cabin to match the need for sweeping.

Support stand A support stand with a wheel is built into the snow sweeper for easy storage.

Extra equipment (options):

Extended brush guard Attaching a brush guard extends the snow sweeper cover, which minimises the snow whirling up on the front wind-screen. Furthermore, the guard makes it easier to control the direction of swept sand and gravel during summer operation. This can be retrofitted on existing snow sweepers as well.

Anti-corrosion treatment The anti-corrosion treatment will extend the life of the attachment.

Technical specifications

Dimensions

Length	mm	3090
Width	mm	1220
Height with cabin	mm	1987 / 1350

Storage dimensions

Length	mm	900
Width	mm	1220
Height	mm	650

Weight

Weight (snow sweeper)	kg	104
-----------------------	----	-----

Performance

Clearing width - straight	mm	1220
Clearing width - angled 25°	mm	1140
Ground clearance below brush	mm	420
Brush diameter Ø	mm	550
Operating speed	km/h	1-10
Theoretical sweeping capacity	m ² /h	12200
Handling snow depth up to	mm	150
Brush speed	rpm	255
Turning angle		25°

CE certified according to EU directive



Snow blower - Park Ranger 2155



1015 mm



2930 mm



1350 mm
1987 mm

Standard equipment:

- Adjustable chute** The snow blower has an adjustable chute that ejects snow 1-10 m away.
- Blade and skid** The snow blower has a replaceable blade and an adjustable skid.

Extra equipment (options):

- Counterweight** If the snow blower is being used without the salt and sand spreader we recommend the use of a counterweight for balancing.
- Anti-corrosion treatment** The anti-corrosion treatment will extend the life of the attachment.

Technical specifications

Dimensions

Length	mm	2930
Width	mm	1015
Height with / without cabin	mm	1987 / 1350

Storage dimensions

Length	mm	790
Width	mm	1010
Height	mm	1050

Weight

Weight (snow blower)	kg	116
----------------------	----	-----

Performance

Clearing width	mm	1000
Feed intake height	mm	600
Ground clearance below snow blower	mm	420
Auger diameter	mm	380
Blower diameter	mm	380
Axle revolutions	rpm	1000
Operating speed	km/h	1-7

Noise emissions

Sound power level LwA (2000/14/EC and DIN EN ISO 3744)	dB(A)	103
--	-------	-----

CE certified according to EU directive





Snow plough

- Park Ranger 2155

Standard equipment:

Safety tilt system When operating in deep snow there is a risk of hitting obstacles. The safety tilt function reduces the risk of damages both to the plough and surroundings.

Rubber scraper edge 100 mm high, 25 mm thick and 1300 mm wide rubber scraper. The scraper edge can be used on two sides giving double usage and extended lifetime. The rubber scraping edge is ideal for use with melting snow and also scrapes the surface thoroughly without damaging it.

Floating skids The 2 skids are height adjustable and ensures that the blade follows ground variations.

Extra equipment (options):

Anti-corrosion treatment The anti-corrosion treatment will extend the life of the attachment.



1300 mm



2700 mm

1350 mm
1987 mm

Technical specifications

Dimensions

Length	mm	2700
Width	mm	1300
Height with / without cabin	mm	1987 / 1350

Storage dimensions

Length	mm	550
Width	mm	1300
Height	mm	545

Weight

Weight (snow plough)	kg	64
----------------------	----	----

Performance

Clearing width - straight	mm	1300
Clearing width - inclined	mm	1130
Ground clearance below scraper	mm	400
Ground clearance under support strut	mm	350
Operating speed	km/h	1-16
Handling snow depth up to	mm	350
Turning angle		30°
Theoretical performance	m ² /h	20800

CE certified according to EU directive



Snow V-plough - Park Ranger 2155



1400 mm



2590-3010 mm



1350 mm
1987 mm

Standard equipment:

- Hydraulic angle adjustment** Each side/blade can be adjusted from the controls inside the cabin, making it easy for the operator to adjust the blades when needed.
- Vibration damping** A-frame featuring integrated vibration damping, which increases comfort and reduces noise.
- Vulkollan scraper edge** 125 mm high, 25 mm thick and 700 mm wide. The vulcanised rubber scraping edge is good for surfaces that require extra care. The snow V-plough can be mounted with either vulcanised rubber scraper or steel scraper.
- Steel scraper edge** The snow V-plough can be mounted with either steel scraper or vulcanised rubber scraper.
- Safety tilt function** When operating in deep snow there is a risk of hitting obstacles. The safety tilt function of lower part of the V-plough reduces the risk of damages both to the plough and surroundings.
- Floating skids** The 2 skids are height adjustable and ensures that the plough follows ground variations.

Extra equipment (options):

- Anti-corrosion treatment** The anti-corrosion treatment will extend the life of the attachment.

Technical specifications

Dimensions

Length	mm	2590-3010
Width (straight)	mm	1400
Height with / without cabin	mm	1987 / 1350

Storage dimensions

Length	mm	500
Width	mm	1200
Height	mm	600

Weight

Weight (snow V-plough)	kg	108
------------------------	----	-----

Performance

Clearing width - straight	mm	1400
Clearing width - inclined	mm	1200-1400
Clearing width - 30°, Y- & V-form	mm	1200
Ground clearance below scraper	mm	140
Ground clearance under support strut	mm	125
Operating speed	km/h	1-16
Handling snow depth up to	mm	500
Turning angle		30°
Theoretical performance	m ² /h	22400

CE certified according to EU directive



Video



EGHOLM

Salt and sand spreader

- Park Ranger 2155



1015 mm



2550 mm

1435 mm
1987 mm

Standard equipment:

- Durable material** All parts that get in contact with salt and sand are rust free, made of synthetic material or stainless steel.
- Stirrer** The stirrer prevents blocking, crushes lumps and ensures precise and uniform spreading - and thereby even thawing of the ground. Made of hardened Hardox steel the stirrer fingers are extremely robust.
- Material storage** There is space for extra bags of salt and sand on top of the hopper grate, enabling the operator to fill the salt and sand spreader on site. Please note the maximum loading capacity.
- Stand** A stand for attaching/detaching is delivered with the spreader as standard. The stand has wheels, making it easy to move the spreader into storage without heavy lifting.
- Tarpaulin cover** A cover keeps the material dry and thereby indirectly improve the spreading accuracy.

Extra equipment (options):

- Guard for salt stop** The guard ensures that tiny material such as vacuum salt, does not just run out of the spreader, which reduces the waste and increase the operation efficiency.
- Anti-corrosion treatment** The anti-corrosion treatment will extend the life of the attachment.

Technical specifications

Dimensions

Length	mm	2550
Width	mm	1015
Height with / without cabin	mm	1987 / 1435

Storage dimensions

Length with stand	mm	1175
Width with stand	mm	800
Height with stand	mm	1350

Weights

Weight with / without cabin ¹⁾	kg	840 / 698
Payload with / without cabin	kg	460 / 602
Weight (spreader)	kg	100
Weight (stand)	kg	31

Spreader

Volume	l	210
Spreader load, max.	kg	350
Loading height	mm	1250

Performance

Spreading width	mm	1000-5000
Operating speed	km/h	1-16

CE certified according to EU directive

¹⁾ Includes: salt and sand spreader, 75 kg operator and 90% fuel capacity.



Honest Work,

Egholm A/S develops, produces and markets utility machines that keep roads, parks and outdoor areas clean and inviting all year round. We supply functional quality machines and attachments to people who do an honest day's work keeping our cities clean and attractive. With special attachments developed for the machines, Egholm machines deliver perfect results no matter the task at hand. Built by craftsmen in Denmark, Egholm machines are in operation in cities and parks all over the world.

Honest Machines,

Egholm utility machines are developed by people who are passionate about technology and innovation. We listen to the people driving, using and servicing Egholm machines, because they are the true experts. It is our mission to design, build and market utility machines that deliver perfect results in real life. Egholm machines are honest machines - not just because they deliver comfort, safety and strong end results: They are also a sound investment for years to come and give you outstanding return on your investment.

Honest People,

We want you to think of us as your partner in every single way. And we always insist on reliability, trust and honesty in our partnership with you and with our network of dealers and service partners. We are straightforward and direct in our communication and in our dealings with everyone. Our belief in hard work and unwillingness to compromise helps us deliver the quality for which we are known. And we believe it is reflected by the machines we build for you, as well.

Egholm A/S

Transportvej 27
7620 Lemvig, Denmark
T.: +45 97 81 12 05
www.egholm.eu - info@egholm.dk

Egholm GmbH

Am Hafen 24
38112 Braunschweig, Germany
T.: +49 (0) 531 129 77-0
www.egholm.de - info@egholm.de